

# Charon

## HTS-E01/E03/C01

### Halfheight turnstiles



#### PRINCIPLE

Classic turnstile system for direction controlled access, installed nearby the reception desk to support the reception staff or operation. Alternatively operation only with card readers

#### FINISH

Stainless steel

- satin finish
- glossy

Glazing: 10 mm toughened glass

Further finishes on request

#### CONSTRUCTION

Framework in stainless steel tubes Ø 48 mm, mitred (optional with curved toughened glass - see photo) or framework in curved stainless steel tubes Ø 60 mm, high quality workmanship and finish.

- with tubular console for card reader

#### Rotating unit

Stainless steel column

- toughened safety glass door wings
  - distance to floor 40 mm type HTS-E03
  - distance to floor 450 mm type HTS-E04
- horizontal handle bar
- curved stainless steel handle
- with stainless steel tube

#### Access side

• inwards right      • inwards left



Customised solutions on request

#### OPERATION

Type 2 servo positioning drive, electrically controlled in 2 directions, locking, drive and toothed holding brake installed in tubular column.

Servo positioning drive moves the turnstile gently into the next rest position. If nobody passes, release is cancelled again after an adjustable time.

**In the event of power failure**  
both directions free

#### ELECTRICAL EQUIPMENT

Control integrated in the unit  
Supply: 230 VAC 50 Hz

#### Reader interface

compatible with access control systems standards

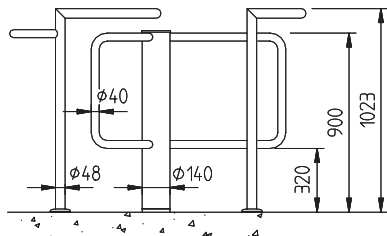
○ serial interfaces

Special interfaces, signal exchange with building services automation and connection of customer's operating elements available on request.

# Charon HTS-E01/E03/C01

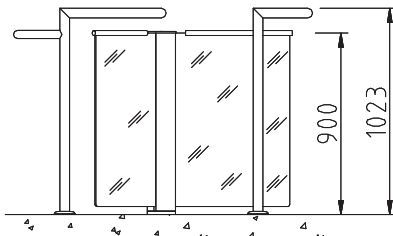
## Halfheight turnstiles

VIEW HTS-E01



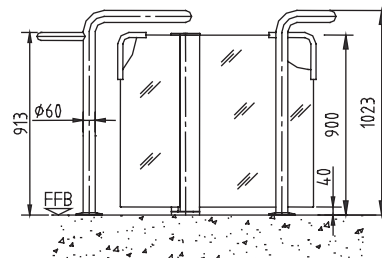
Driving column with stainless steel tubes Ø 40 mm, frame in stainless steel tubes Ø 48 mm, suitable for outside installation.

VIEW HTS-E03



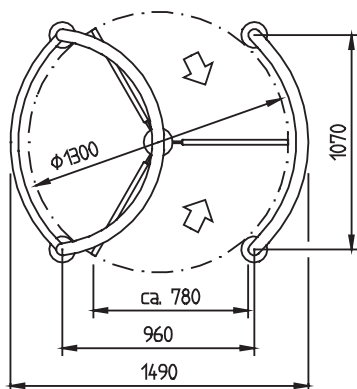
Driving column with door wings in glass 40 mm floor distance and horizontal stainless steel handles, frame in stainless steel tubes Ø 48 mm.

VIEW HTS-C01



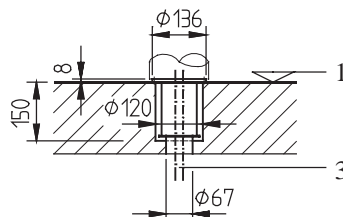
Driving column with door wings in glass 40 mm floor distance and curved stainless steel handles, frame in stainless steel tubes Ø 60 mm.

PLAN HTS-E03

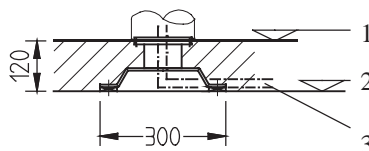


INSTALLATION OF THE COLUMN  
Ø 140 mm

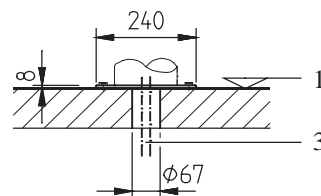
- cast-in with clamping sleeve in floor



- on structural floor (SFL)

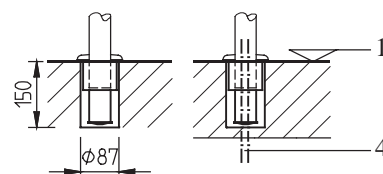


- on finished floor (FFL)

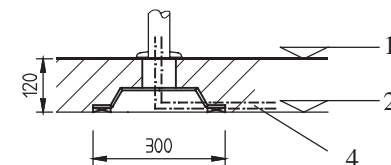


INSTALLATION OF THE FRAME  
Ø 48 mm / Ø 60 mm

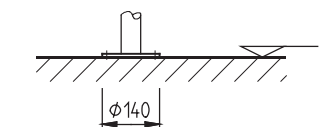
- cast-in with clamping sleeve in floor



- on structural floor (SFL)



- on finished floor (FFL)



### OPTIONS

- handrail element and door wings in same design
- installation of card readers, etc.
- signalling systems
- random selection generators
- control desk or panel for remote control (release, block and reject)
- emergency power supply
- special door handles

### Legend:

- 1. FFL
- 2. SFL
- 3. conduits
  - 1 x PG 21 (5 x 1,5 mm<sup>2</sup>)
  - 1 x PG 21 (6 x 2 x 0,14 mm<sup>2</sup>)
- 4. conduits
  - 1 x access control system

Sales partner: