

Charon

HSD-E01/E03

E04/C01

Halfheight swing doors



PRINCIPLE

Automatic swing door in Charon-design. Basic standards and individual designs to accommodate indoor and outdoor applications.

FINISH

Stainless steel

- satin finish
- glossy

Glazing: 10 mm toughened glass

Additional design on request

CONSTRUCTION

Stainless steel column

- toughened safety glass door leaves
 - floor distance 40 mm
 - floor distance 450 mm
 - horizontal handle bar
 - curved stainless steel handle
- with stainless steel tube

Individual design on request

OPERATION

Servo positioning drive opens and closes the door in the desired direction at low power. Remote controlled by an access control system or manually controlled. Opening time and opening angle are adjustable.

In the event of power failure
both directions free

ELECTRICAL EQUIPMENT

Control in external unit
Supply: 230 VAC 50 Hz

Reader interface

compatible with access control systems standards

- serial interfaces

Special interfaces, signal exchange with building services automation and connection of customer's operating elements available on request.

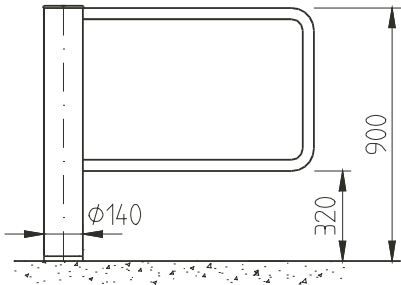
OPTIONS

- handrail element and turnstile systems in same design
- stands for card readers
- control desk or panel for remote control (release, block and reject)
- special door handles

Charon HSD-E01/E03/E04/C01

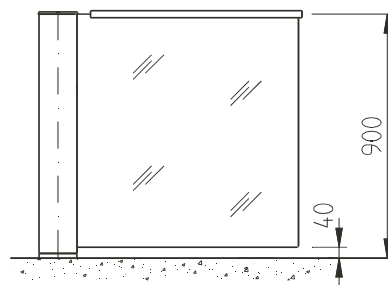
Halfheight swing doors

VIEW HSD-E01



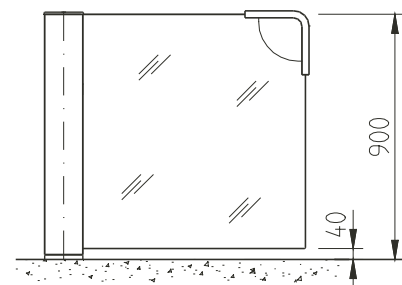
Driving column with stainless steel tubes Ø 40 mm, suitable for outside installation

VIEW HSD-E03



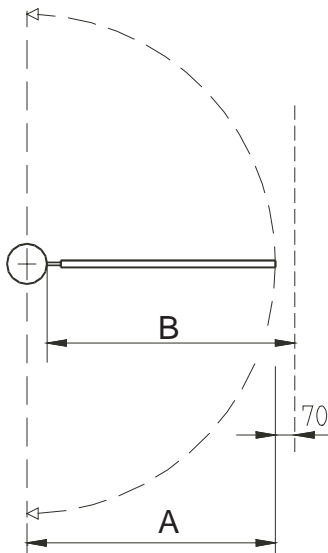
Driving column with glass door wing, 40 mm floor distance and horizontal stainless steel handles

VIEW HSD-C01

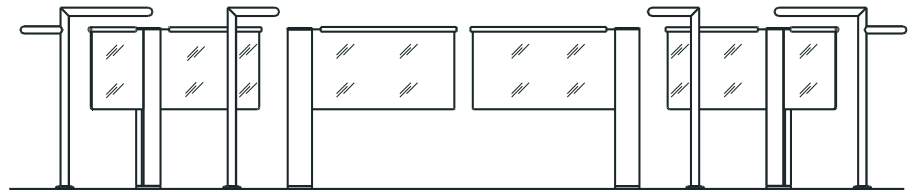


Driving column with glass door wing, 40 mm floor distance and curved stainless steel handles

PLAN HSD-E03



INSTALLATION EXAMPLE



Double swing door HSD-E04 and 2 Charon-turnstiles HTS-E04 with 450 mm floor distance and horizontal stainless steel handle bars

DOOR WING WIDTH (all dimensions in mm)

Door wing width A resp. passage width B
650 700 750 800 850 900 mm

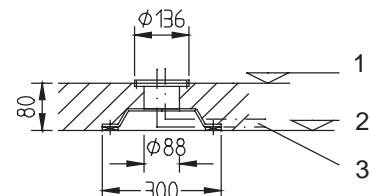
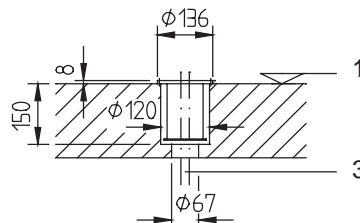
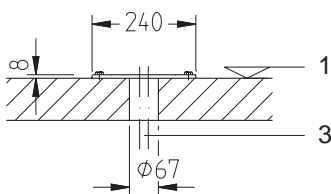
INSTALLATION OF THE COLUMN

Ø 140 mm

● on finished floor (FFL)

○ cast-in with clamping sleeve in floor

○ on structural floor (SFL)



Legend:

- 1. FFL
- 2. SFL
- 3. conduits
 - 1 x PG 21 (5 x 1,5 mm²)
 - 1 x PG 21 (6 x 2x0,14 mm²)

● alternative ○ optional
Subject to technical modifications

┌ Sales partner: ┐