

Kentaur FTS-E02/C01

Fullheight turnstiles



PRINCIPLE

Turnstile for automatic access control with card readers. Prevents unobserved, unauthorized, simultaneous entry.

FINISH

Aluminium parts

paint finish acc. to RAL colours

Steel parts

hot-galvanized

- hot-galvanized and paint finish acc. to RAL colours

Stainless steel glossy

Additional design on request

Please ask also for 90° and 180° turnstiles with and without integrated doors and bikeways and for mechanical exit turnstiles.

CONSTRUCTION

Column in stainless steel

- curved turnstile bars
- straight turnstile bars

Access side

- inward right
- inward left



Entry enclosure

steel frame, curved with steel sections

- with glass panelling
- with stainless steel decorative panelling
- light metal casing with front panel for built-in components
- antenna panel for distance reader

Exit enclosure

steel frame, curved with steel sections

- with glass panelling
- with stainless steel decorative panelling
- light metal casing with front panel for built-in components
- antenna panel for distance reader

Subsequent modification is possible

Portal and housing in steel
place reserved for installations

- design completely in stainless steel

OPERATION

type 0 mechanical
1 direction free /
opposite direction locked

type 1.1 1 direction
electrically controlled /
opposite direction locked

type 1.2 2 direction
electrically controlled

type 2 servo-positioning drive /
2 directions
electrically controlled

Servo positioning drive moves the turnstile column gently into the next rest position.

Rotation speed adapts individually to each person.

If no one passes through, release is cancelled again after an adjustable period.

Kentaur FTS-E02/C01

Fullheight turnstiles

OPERATION (continued)

In the event of power failure

- entry direction clear
- locked
- exit direction clear
- locked

ELECTRICAL EQUIPMENT

Control integrated in the unit
Supply: 230 V AC 50 Hz

Different voltages available on request

Reader interface

compatible with access control systems standards.

- serial interfaces

Special interfaces, signal exchange with building services automation and connection of customer's operating elements available on request.

OPTIONS

- manual release when access direction is locked on power failure
- addition or installation of card readers, intercoms, coin machines etc.
- telescopic extension in the aluminium casing (see small picture overleaf)
- signal equipment
- random-check generators
- control desk or panel for remote control (release, block and reject)
- emergency power supply

- weather protection roof
 - with fascia and fall-pipe (connection to drainage by customer)
 - and ceiling panelling
 - lighting
- multiple installations (side by side)
 - under one roof

INSTALLATION

- in sleeve-foundation
- on structural floor (SFL)
- on finished floor (FFL)

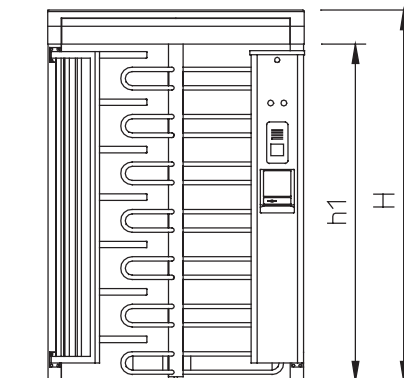
Foundation plans on request

DIMENSIONS

(all dimensions in mm)

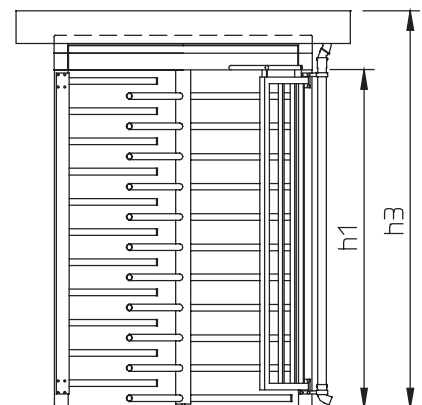
B overall width	1540
b1 entry width	760
b2 passage width	640
b3 with roof fascia	2000
T overall depth	1250
t3 with roof fascia	2820
H overall height	2270
h1 doorway height	2060
h3 with roof fascia	2420
di turnstile diameter	1300
X FFL - SFL =	150
weather protection roof	1820x2770

ELEVATION FTS-C01



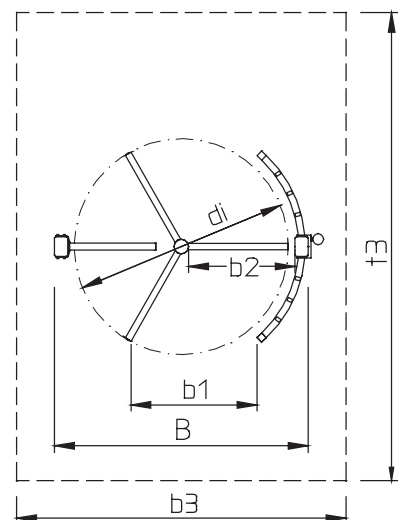
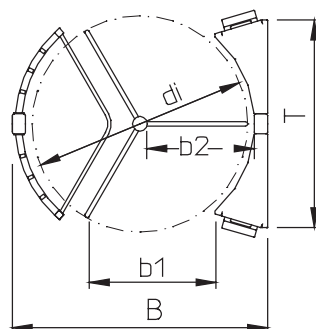
Curved turnstile bars, entry and exit enclosure in an aluminium casing with card reader, intercom and signal equipment.

ELEVATION FTS-E02



Straight turnstile bars, entry and exit enclosure as steel frame, weather protection roof with fascia and fall-pipe.

PLAN FTS-C01



Sales partner:

● alternative ○ optional
Subject to technical modifications