

Kentaur FTS-M03

Fullheight turnstiles with integrated door



PRINCIPLE

Turnstile for automatic access control with card readers. Prevents unobserved, unauthorized, simultaneous entry.

FINISH

Aluminium parts

paint finish acc. to RAL colours

Steel parts

hot-galvanized

- hot-galvanized and paint finish acc. to RAL colours

Stainless steel

glossy

- satin finish

Individual design on request

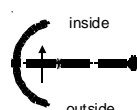
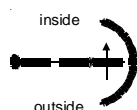
Please ask also for 90° and 120° turnstiles with bikeways and for mechanical exit turnstiles.

CONSTRUCTION

Column in stainless steel
with straight turnstile bars

Access side

- inward right (integrated door left)
- inward left (integrated door right)



Entry enclosure

- steel frame, curved with steel sections
- with glass panelling
 - with stainless steel decorative panelling
 - console for reader installation

Exit enclosure

- steel frame, curved with steel sections
- with glass panelling
 - with stainless steel decorative panelling
 - console for reader installation

Subsequent modification is possible

Integrated door

- with steel sections
- with glass panelling
- with stainless steel decorative panelling

Portal and housing in stainless steel

place reserved for installations

- design completely in stainless steel

OPERATION

Type 0 mechanical
1 direction free /
opposite direction locked

Type 2 servo-positioning drive /
2 directions
electrically controlled

Servo positioning drive moves the turnstile gently into the next rest position.
Rotation speed adapts individually to each person.

Kentaur FTS-M03

Fullheight turnstiles with integrated door

OPERATION (continued)

If nobody passes, release is cancelled again after an adjustable period.

The integrated door is fitted with a lock. When opening the integrated door, the column automatically rotates through 90° into the position giving the maximum passage width.

In the event of power failure (only turnstile)

- entry direction open
- locked
- exit direction open
- locked

Various possibilities for door integration.

ELECTRICAL EQUIPMENT

by type 2:

Control integrated in door

Supply: 110 - 230 V AC 50/60 Hz

Reader interface

compatible with access control systems standards.

- serial interfaces

Special interfaces, signal exchange with building services automation and connection of customer's operating elements available on request.

INSTALLATION

in sleeve-foundation

- on structural floor (SFL)
- on finished floor (FFL)

Foundation plans on request

┌ Sales partner:

OPTIONS

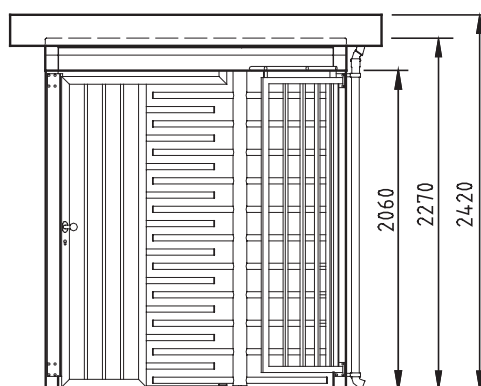
- manual release when access direction is locked on power failure
- installation of card readers, intercoms, coin machines etc.
- signal equipment
- door closer
- door opener
- door drive
- random-check generators
- control desk or panel for remote control (release, block and reject)
- emergency power supply

OPTIONS

- reinforced version for extrem requirements
- waterproofed roof
 - with fascia and rain spout
 - and ceiling panelling
 - fall-pipe instead of rain spout (connection to drainage by customer)
- lighting
- double unit, symmetric with 2-leaf integrated door
- multiple installations (side by side)
 - under one roof

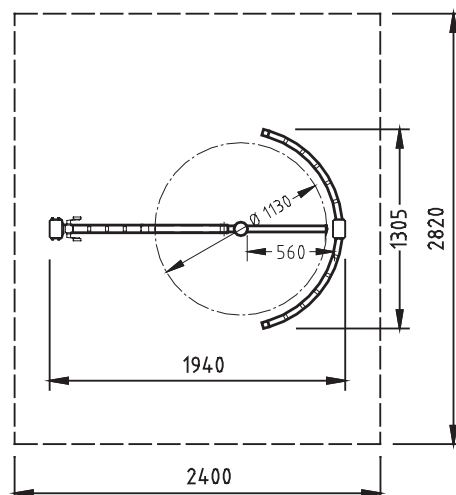
ELEVATION

(all dimensions in mm)



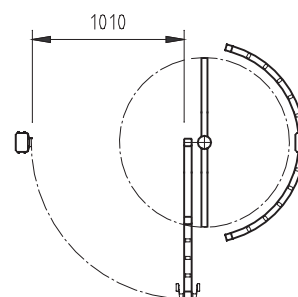
PLAN

(with closed integrated doors)



PLAN

(with open integrated doors)



● alternative ○ optional
Subject to technical modifications