

# Kerberos TPB E01/E02

## Tripod barriers



### PRINCIPLE

Kerberos tripod barriers are the ideal solution for a quick singling out of persons and for access control. They can be installed within view of reception staff to support surveillance, e. g. at stadias, leisure centers, banks or in public transit areas. Various locking aggregates allow for an adaptation to different needs. They can be combined with all type of card readers or ticketing machines and are suitable for outside installation.

### FINISH

stainless steel satin finish (grit 320)

### CONSTRUCTION

**Housing** in stainless steel  
Columns with space for card readers or other installations

#### Crossbars

Type 2: stainless steel Ø 34 mm,  
Type 0/1.1/1.2: aluminium Ø 34 mm

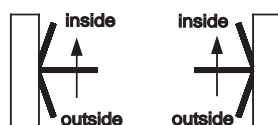
**Covering plates** in stainless steel, 3 mm, W x H = 255 x 175, for reader installation outside or push button inside

- plastic plate, 5 mm  
(for non-contact readers)

### FUNCTION

#### Access side

- inwards right (variant A)
- inwards left (variant B)



#### Access

- Type 0: mechanical, one direction free, opposite direction blocked
- Type 1.1: one direction controlled, opposite direction blocked
- Type 1.2: two directions controlled
- Type 2: two direction controlled with servo positioning drive

#### Drive

- Type 0 / 1.1 / 1.2: manual, end point positioning
- Type 2, servo positioning drive: after release and a manual push, the tripod barrier turns automatically 120°. Smooth motion and a longtime life are guaranteed. Unit also opens under load.

### Automatic fold-down

- standard: fixed crossbars
- fold-down of crossbars (type 1.1, 1.2 and 2) to allow free passage for groups or transit of goods, the upper crossbars can be folded down by using the release button. The resetting is effected manually.
- Type 2: Thanks to Gallenschütz patent device, the unit resets automatically.

### In the event of power failure

- Type 0: one direction free, opposite direction blocked
- Type 1.1: both directions blocked
- Type 1.2: both directions blocked
- Type 2: both directions turn freely

If crossbars are foldable (option for type 1.1 / 1.2 / 2), the upper crossbar collapses.

### When power is restored

If crossbar is folded down, it must be replaced manually. Type 2 resets automatically.

### Safety devices

For all locking aggregats no safety devices are necessary.

# Kerberos TPB-E01/E02

## Tripod barriers

### ELECTRICAL EQUIPMENT

#### Electrical datas

Power supply:

110 - 250 VAC, 50 - 60 Hz

Control voltage: 24 VDC

#### Control possibilities

According to the aggregates' type, various numbers of inputs and outputs with corresponding functionality are possible.

For servo positioning drive (type 2): various adjustment possibilities via PC or manual programming device, e. g. speed ( $V_{min}$ ,  $V_{max}$ ), time out, etc.

Inputs- / outputs freely programmable:

4 inputs, 24 VDC:

(standard: single release entry / exit, release = crossbar folds down, blocking)

8 outputs, 24 VDC

3 relais outputs, potentialfree

#### Release

via a potentialfree normally open contact, e. g. by means of push button or customer's card reader

### INSTALLATION

on finished floor level (FFL)

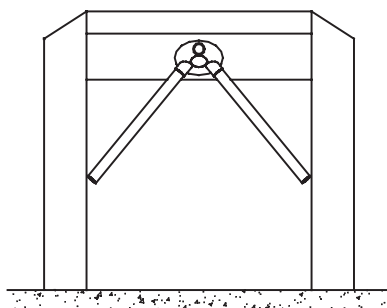
- structural floor level (SFL),  
X = 80 - 120 or X = 121 - 160
- Pallet with stainless steel ramp,  
rubber covering appr. 1,5 m x 1,5 m

### OPTIONS

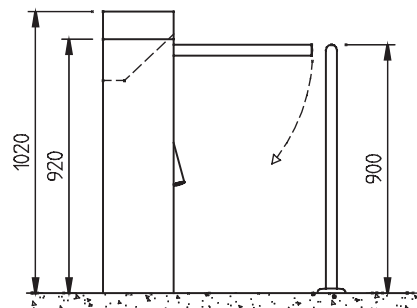
- guiding bars
- preparation for customer's reader installation
- release push button in covering plate
- signal devices (only type 1.2 or 2)

- operating panels (only type 2):  
flush or concealed installation,  
also as double or triple unit
- additional board for servo  
positioning drive (type 2)
- counter
- coin acceptor unit with catch-  
ment box
- housing in stainless steel V4A  
(1.4404 or 1.4571)
- for E01: stainless steel columns  
on top plane (instead of sloping)

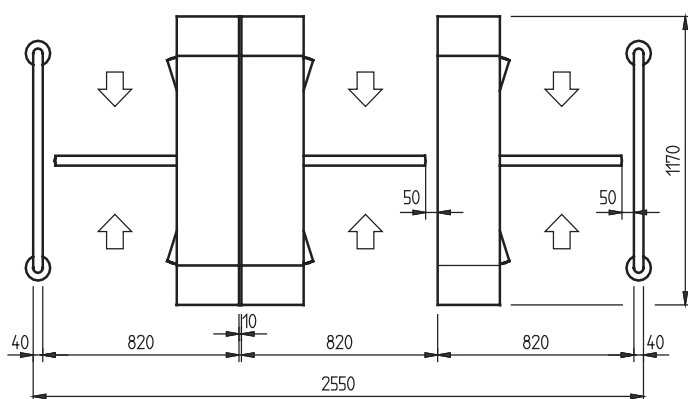
VIEW TPB-E01/E02



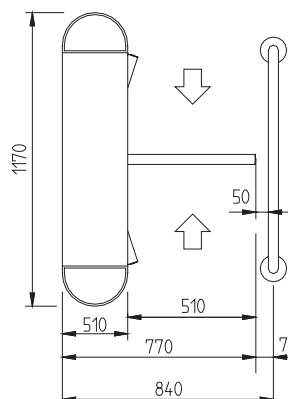
SIDE VIEW TPB-E01



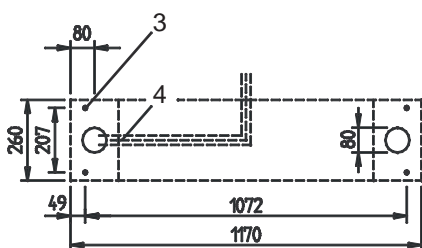
PLAN installation example several units TPB-E01



PLAN TPB-E02

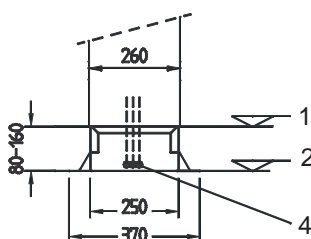


PLAN installation of FFL



SUB STRUCTURE

installation on SFL



### LEGEND

1. FFL
2. SFL
3. screws  $\text{AE } 10 \times 100$
4. conduits
  - 1 x PG 29 (3 x 1,5 mm<sup>2</sup>)
  - 1 x PG 29 (14 x 2 x 0,8 mm<sup>2</sup>)
  - 1 x access control systems

All measures in mm.

Sales partner:

● alternative ○ optional  
Subject to technical modifications