

1

2

3

4

5

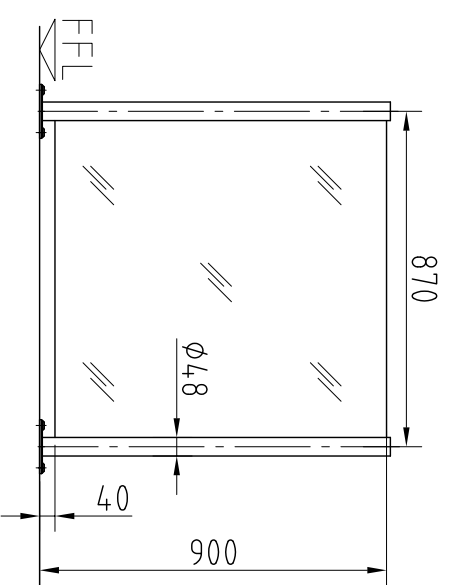
6

7

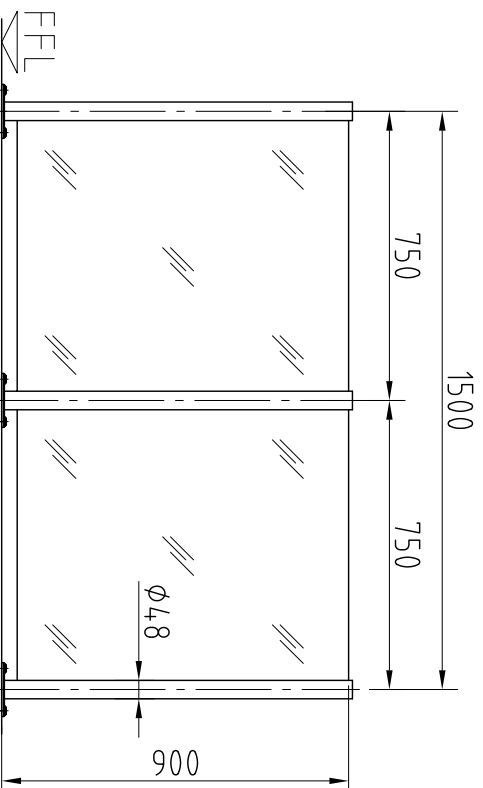
8

A

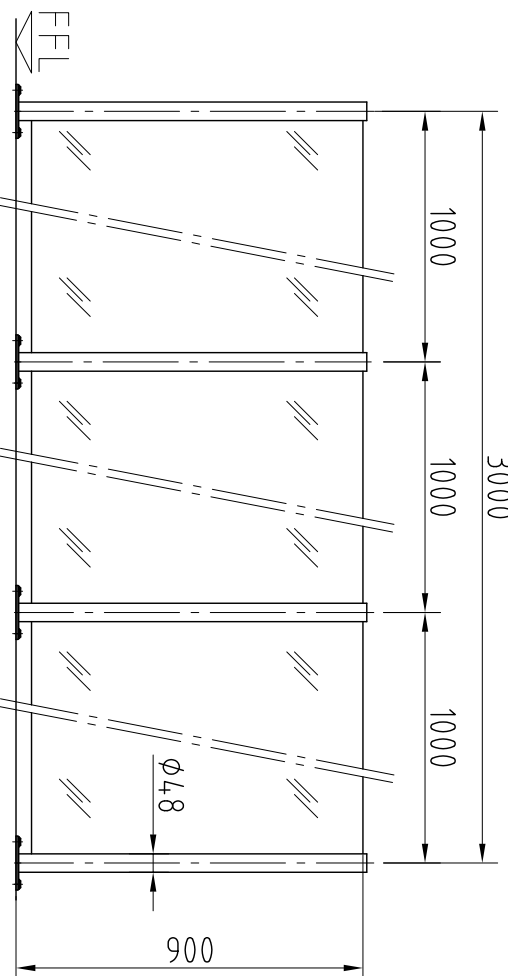
Measure of axis 500mm – 1500mm



Measure of axis 1500mm – 3000mm



Measure of axis 3000mm – 4500mm



PGB-S01
Order-Nr.: 19081366-refer to the price list for delivery time

Brief description basic equipment

- Total height: 900mm
- Axial dimension: 870mm
- Personal guiding bar as variable all-glass barrier system with two end posts made of tubular stainless steel AISI 304 / V2A (1.4301) ø48mm, satin finish and with 10mm toughened glass panel (visible edges grinded and polished)
- Stainless steel satin finish, grain 320
- On finished floor level FFL with flange plate ø140 including fixing material
- Suitable for outdoor installation!
- We recommend glossy finish (see options).

Construction

measure of axis

- 19081944 shortened from 500-870 mm, price independent from length
- 19084388 extended, price per 100mm. Instruction: when exceeding the max. measure of axis of 1500mm in each case an additional post in necessary
- 19081959 middle post for personal guiding bars with measure of axis > 1500mm.
- 1908xxxx special height extension to a measure of 1200mm
- 19080127 handrail in stainless steel AISI 304, (1.4301) satin finish ø25mm, fixed on upper glass edge of PGB. Price per meter.

Finish

- 19080538 finish glossy, stainless steel AISI 304 / V2A (1.4301) electropolished, recommended for inits that are suitable for outdoor installation

Installation

floor fixing

- on finished floor level FFL with flange plate ø140 including fixing material
- 19080988 pre-delivery sub-structure without transport costs!
- 19084377 installation on trapezoid plate with variable sub-construction, inclusive fixing material and stainless steel rosettes. Measure X = 80-180mm.
- 19084343 installation on structural floor level SFL inclusive fixing material and stainless steel rosettes
- 19084379 clamp fixing cast-in sealed into tapping drill hole provided by customer, inclusive stainless steel rosettes and grouting mortar
- 19084341 installation on finished floor level FFL into tapping drill hole provided by customer, inclusive stainless steel rosettes and grouting mortar.
- Price reduction per Post
- 19084345 installation plugable inclusive fixing material and stainless steel rosettes

Drawing checked and
approved for manufacturing

Date _____ Signature _____

Dimensions to be checked on site

Customer:

Code:

Projekt:

Unit:

Delivery address:

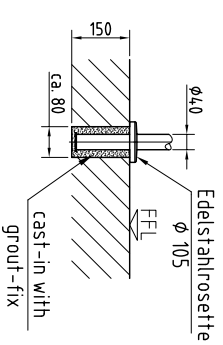
Requested delivery date:

remark / others:

remark / others:

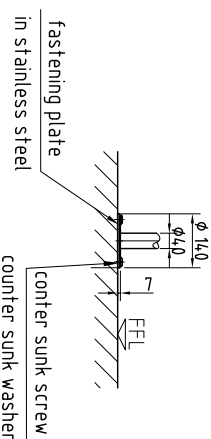
Fixing A

"cast-in"



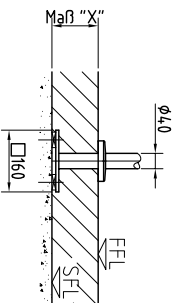
Fixing B

"dowelled on FFL"



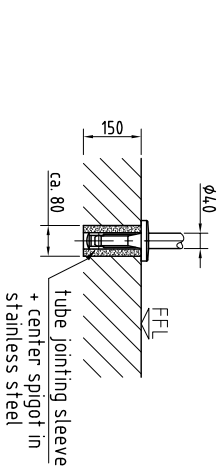
Fixing C

"dowelled on RFB"



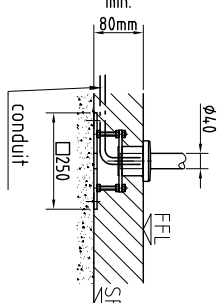
Fixing D

"plug-in"



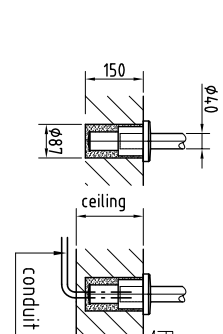
Fixing E

"clamp fitting on mounting plate for structural floor"



Fixing G

"clamp fitting cast-in"



C Neuer Preisliste 2007 angepasst

28.07.07 ELE

B Befestigung von FFB auf RFB gedibelt geändert

20.02.06 MIB

A Neue Artikelnummer eingetragen

17.12.03 MSB

Index Änderung

Datum Name

KABA

Client

Kaba Gallenschütz GmbH

Project

Nikolaus-Otto-Str. 1 x D.-77815 Bühl

Tel.: 07223/286-0

Project

Date Name

scale

Title

PGB-S01 / ø48mm

Drawing-No. 200 9016 002C

Layout

sign. 30.09.02 BFH

scale 1:20

Title Positions-Nr. 19082012

Job-No.

replaced by

check. 28.07.07 HS

scale

Title Positions-Nr. 19082012

Job-No.

replaced by

protection mark under DIN 34-2-E substitute for

replaced by