

1

2

3

4

5

6

7

8

PGB-E01
Order-Nr.: 19080407-refer to the price list for delivery time

Brief description basic equipment

- Total height: 900mm
- Axial dimension: 870mm
- Personal guiding bar made of tubular stainless steel AISI 304 / V2A (1.4301) $\phi 40$ mm, satin finish
- Stainless steel satin finish, grain 320
- On finished floor level FFL with flange plate $\phi 140$ including fixing material
- Suitable for out-soor installation !
- We recommend glossy finish (see options).

Construction

measure of axis

- 19084398 shortened from 500-870 mm, price independent from length
- 19084381 extended, price per 100mm. Instruction: when exceeding the max. measure of axis of 1500mm in each case an additional post in necessary
- 19081102 middle post for personal guiding bars with measure of axis > 1500mm.
- 1908xxxx special height extension to a measure of 1200mm

Finish

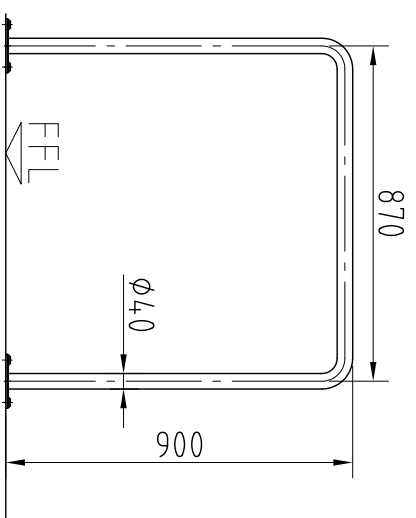
- stainless steel satin finish, grain 320
- 19080557 finish V2A glossy, stainless steel V2A (1.4301) polished electrolytical, axis measure 500 to 1000mm, recommended for outdoor installation
- 19080553 finish V2A glossy, stainless steel V2A (1.4301) polished electrolytical, axis measure 1100 to 1500mm, recommended for outdoor installation
- 19080558 finish V2A glossy, stainless steel V2A (1.4301) polished electrolytical, axis measure 1600 to 2200mm, recommended for outdoor installation

Installation

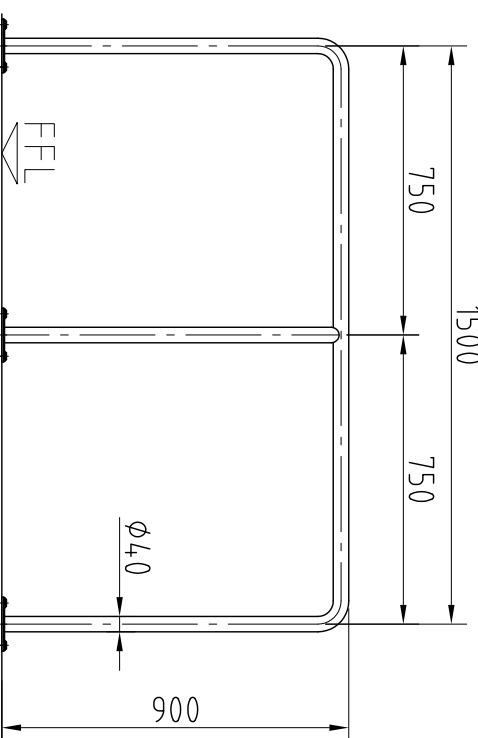
floor fixing

- on finished floor level FFL with flange plate $\phi 140$ including fixing material
- 19080988 pre-delivery substructure without transport costs!
- 19084377 installation on trapezoid plate with variable sub-construction, inclusive fixing material and stainless steel rosettes. Measure X = 80-180mm.
- 19084343 installation on structural floor level SFL inclusive fixing material and stainless steel rosettes
- 19084379 clamp fixing cast-in sealed into tapping drill hole provided by customer, inclusive stainless steel rosettes and grouting mortar
- 19084341 installation on finished floor level FFL into tapping drill hole provided by customer, inclusive stainless steel rosettes and grouting mortar.
- Price reduction per Post
- 19084345 installation plugable inclusive fixing material and stainless steel rosettes

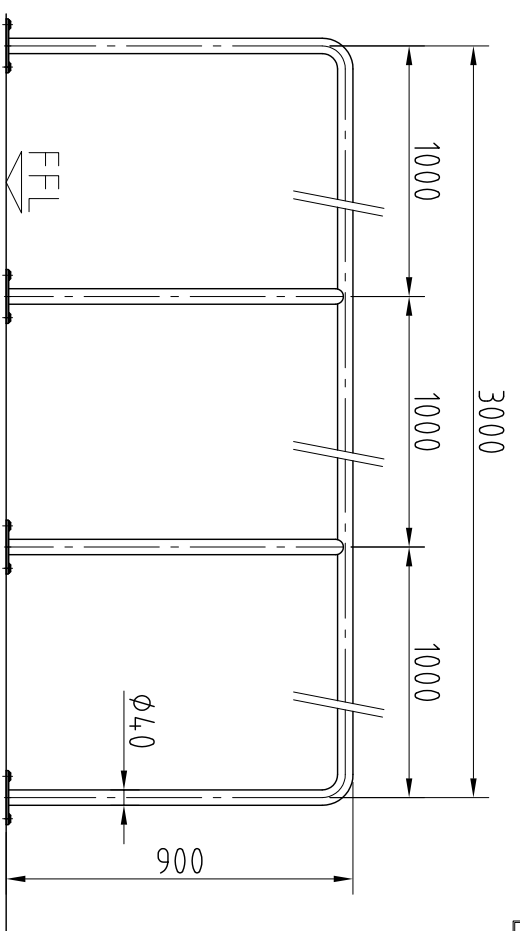
Measure of axis 500mm - 1500mm



Measure of axis 1500mm - 3000mm



Measure of axis 3000mm - 4500mm



Customer:

Code:

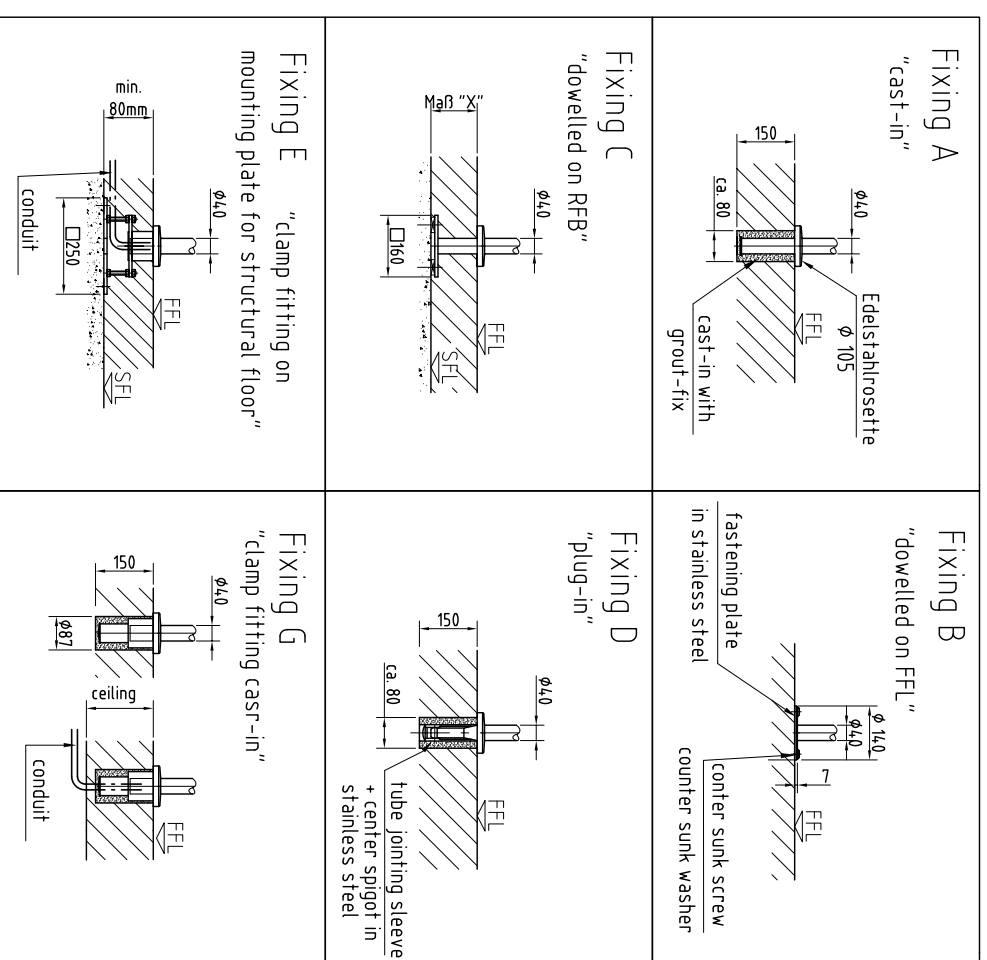
Projekt:

Unit:

Delivery address:

Requested delivery date:

remark / others:



Drawing checked and
approved for manufacturing

Signature _____

Date _____

Dimensions to be checked on site

C	Neuer Preisliste 2007 angepasst	28.07.07	ELE
B	Befestigung FFB und variable UK geändert	15.06.2006	BFH
A	Neue Artikelnummer eingetragen	17.12.2003	MSB
Index	Änderung	Datum	Name

KABA

Kaba Gallenschütz GmbH
Nikolaus-Otto-Str. 1 x D-77815 Bühl
Tel.: 07223/286-0
Fax: 07223/286-111

Client
Project

Date 27.09.2001
Name RME
scale 1:20
Title PGB-E01
Positions-Nr. 19082012

sign 28.07.07
check HS

replaced by

Drawing-No. 200 9006 002C
Job-No.
Layout

protection mark under DIN 34-2-E